



The Whole Works 2023

Annual Report to the Emmet County Board of Commissioners
from the Emmet County DPW Board & Staff



Landfill

- Styrofoam
- Chip bags
- Candy wrappers
- Plastic forks, knives, spoons
- Non-container plastic
- Any non-recyclable, non-compostable items

TRASH ONLY

Bottles, Cans and Cups



Please Empty All Liquids

Bottles, Cans & Cups

Food & Paper

for composting



COMPOSTABLES

Financials

2023 REVENUES

RECYCLING PROGRAMS

Sale of Materials	\$531,348.12
Curbside Recycling	\$523,280.58
Out-of-County Fees	\$588,625.44
Drop-off Center For-Fee Recycling	\$228,684.07
Compost, Mulch, & Bin Sales	\$21,016.80
From Waste Tip Revenues	\$449,568.12
County General Fund	\$0.00
Other Income minus Write Off	\$33,277.57
Grants	\$10,000.00
Write offs/Collections	(\$5,349.01)
Subtotal	\$2,151,768.03

WASTE TRANSFER STATION

Charges for Services	\$3,414,511.79
County General Fund	\$0.00
Interest Income	\$75,275.30
Grants	\$28,103.53
Other Income*	\$33,853.60
Subtotal	\$3,551,744.22

TOTAL DPW REVENUE.....\$5,703,512.25

2023 EXPENSES

RECYCLING PROGRAMS

Personnel	\$1,317,291.74
Contractual Services	\$183,882.13
Operations	\$674,763.68
Depreciation	\$456,860.26
Subtotal	\$2,632,797.81

WASTE TRANSFER STATION

Personnel	\$632,598.70
Contractual Services	\$366,016.78
Landfill Fees	\$1,778,975.14
Operations	\$145,277.17
Depreciation	\$216,231.46
Subtotal	\$3,139,099.25

TOTAL DPW EXPENSES\$5,771,897.06

NOTES

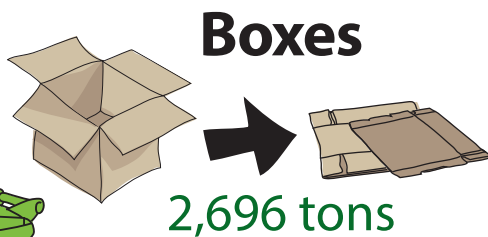
*Transfer Station "Other Income" includes monies from business and out-of-county users of the Household Chemical Drop-off (HCD) program and donations to the HCD program.

Recycled Materials Data



Paper

1,379 tons



Boxes

2,696 tons

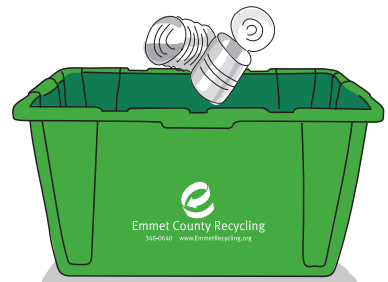


Bags

110 tons

Mixed Containers

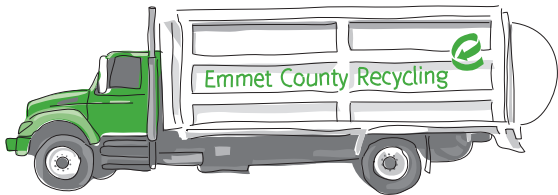
1,683 tons



Daily Recyclables	2023	2022
Paper, Boxes, Bags	4,185	4,380
Mixed Containers	1,684	1,378
TOTAL TONS	5,869	5,758

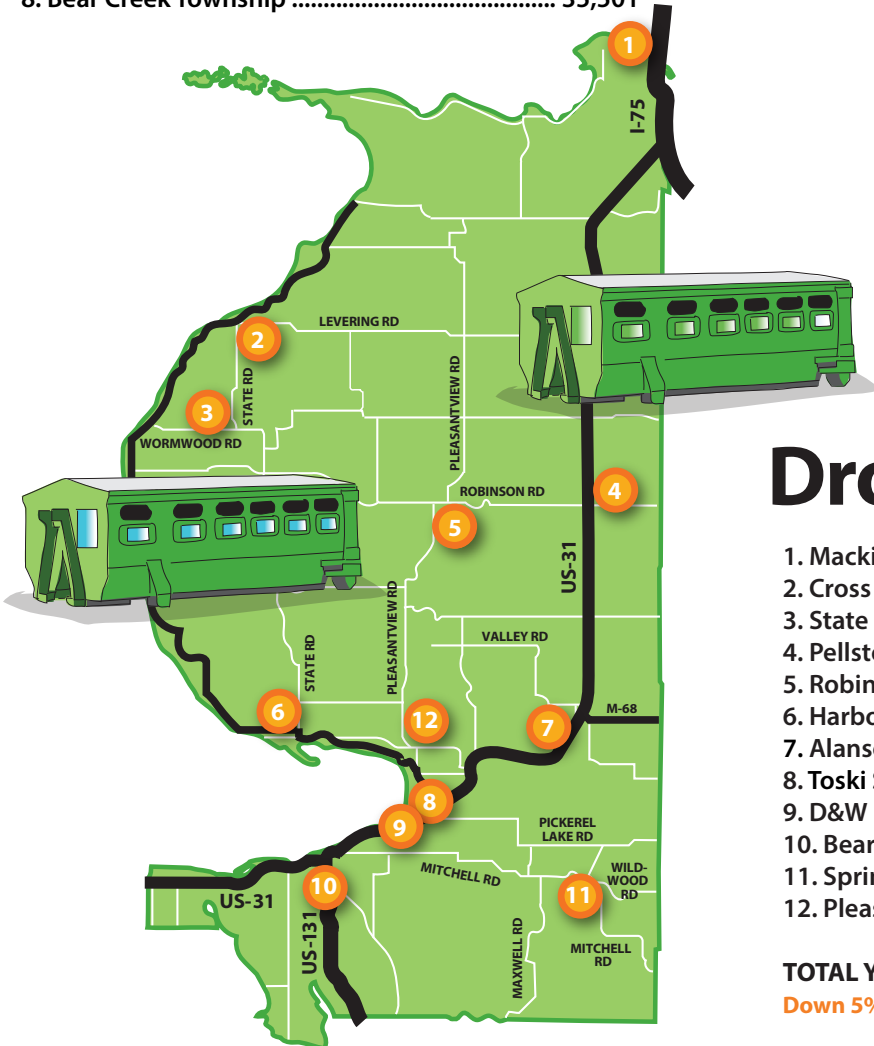
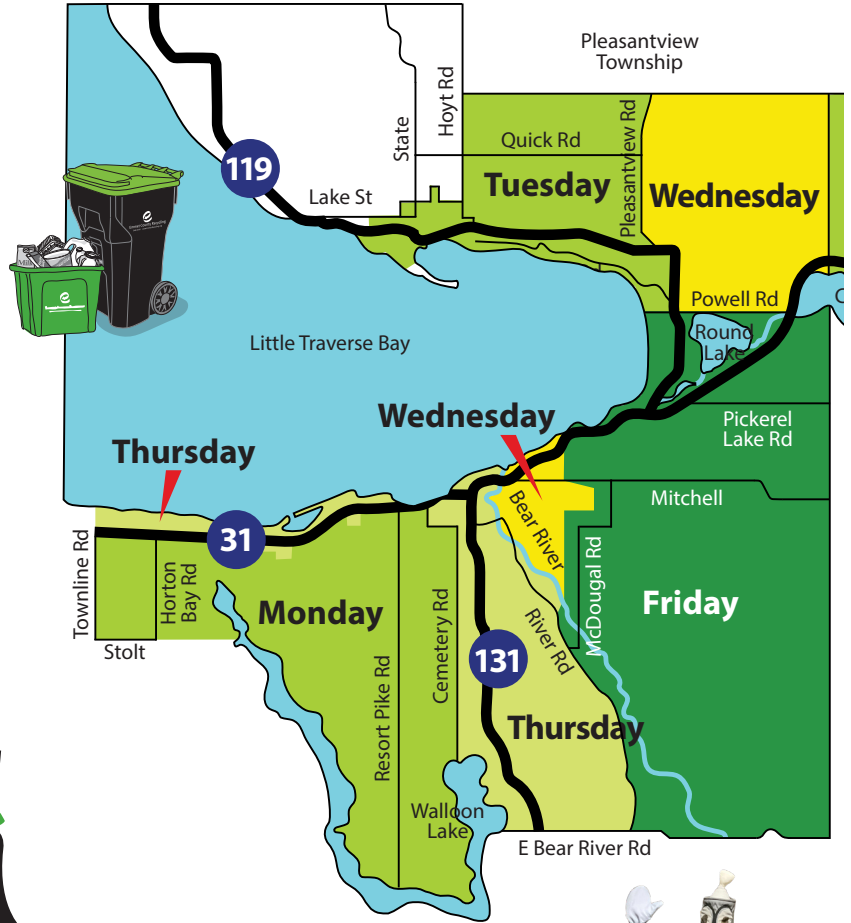
Statistics

167,016
Curbside Pick Ups 2023
Up 1% over 2022 (165,323)



Curbside pick ups by location

1. Resort Township 31,949
2. Alanson2,919
3. Little Traverse Township..... 22,942
4. Harbor Springs..... 14,366
5. Petoskey 51,863
6. Bay Harbor4,858
7. Bay View2,618
8. Bear Creek Township 35,501



How many Emmets
can you find?



Dropsite Recycling

1. Mackinaw City.....6,178 Yds
2. Cross Village2,372 Yds
3. State Road [Readmond Township]..... 1,303 Yds
4. Pellston.....6,149 Yds
5. Robinson Road..... 2,754 Yds
6. Harbor Springs Area 11,959 Yds
7. Alanson8,735 Yds
8. Toski Sands3,389 Yds
9. D&W 11,047 Yds
10. Bear Creek Crossings 17,688 Yds
11. Springvale Township.....5,181 Yds
12. Pleasantview Drop Off Center 10,532 Yds

TOTAL YARDS87,287 Yds
Down 5% from 2022 (91,394 Yards)

Battery Recycling Campaign

Emmet County Recycling (ECR) applied for and received a \$10,000 grant from the Department of Environment, Great Lakes and Energy (EGLE) for rural electronics recycling. Batteries are one of the additional material types we collect at the Pleasantview Drop Off Center.

Five area hardware and lumber stores have graciously hosted public battery buckets for our community to improve access to battery recycling. ECR staff collects battery buckets on a regular basis and cleans, sorts and tapes them for shipment to our end market for recycling.

Our program chose to update current educational materials and collection systems for battery recycling. Battery related fires are becoming more prevalent in our industry due to the increase in the use of lithium-ion batteries in our everyday lives. Improper disposal can cause a fire, causing safety concerns for our staff, equipment and facility.

Our local battery bucket hosts at Meyer Ace Hardware, Preston Feather, W.W. Fairbairn & Son's and Cook's were receptive to our new program utilizing a color coded battery collection system; blue for household batteries and orange for lithium – sometimes disguised as household batteries. All were supportive in helping spread the message to customers to tape the terminals of lithium batteries.

A huge **THANK YOU** to all of our battery bucket businesses for being such great hosts of the program. Make sure you're looking for these recycling buckets next time you're at one of these great locations!

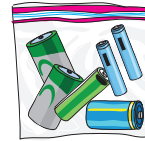
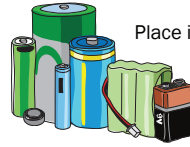


Make a *positive* impact -

Recycle Your Batteries

Household Batteries

Ready to Recycle!
Place in the **blue** bucket.



Bloated or corroded?
Bag 'em up.
Use a **clear** bag for easy identification.

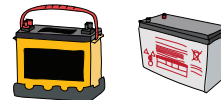
Lithium battery?

Tape the terminals for safety.
Always use clear tape.
Place in the **orange** bucket.



Where?

1. Cook's Hardware - Pellston
2. W.W. Fairbairn & Sons - Alanson
3. Preston Feather - Harbor Springs
4. Pleasantview Drop Off Center
5. Meyer Ace Hardware - Harbor Springs
6. Meyer Ace Hardware - Petoskey North
7. Meyer Ace Hardware - Downtown Petoskey
8. Preston Feather - Petoskey



Sealed lead acid batteries are *only* accepted at the Pleasantview Drop Off Center.

Do NOT recycle batteries in your curbside recycling or at a drop site.



Why?

- Improper disposal can cause a **fire!**
- Valuable battery materials can be remanufactured into new products!



231.348.0640

emmetrecycling.org

recycle@emmetcounty.org

Carton Council Tour & Video

Record Tours



A camera crew and Carton Council staff gathered from across the nation at Emmet County Recycling on May 17 to highlight our origin story and share the great work accomplished in carton recycling at our facility.

The Carton Council is an industry organization with a goal to limit the number of cartons going to landfill through promotion of recycling technology, local collection programs and education.

Carton Council chose Emmet County Recycling as their first spotlight program not only because we were early adapters of the material, but because we are one of only a few Materials Recovery Facilities (MRF) in the country to accept cartons via mail.

Residents without access to carton recycling in their communities throughout the country are encouraged to package and mail their items to us. On a daily basis, boxes full of cartons are delivered and line the Drop Off Center office hallway, ready to be recycled.

Next time you're bragging about our amazing recycling program, tell your friends from anywhere they can join too.

To see our very own Lindsey Walker the movie star, scan the QR code above for a 20 minute video or search on Spotify.

“Here at Emmet County Recycling, our connection really is embedded in our community... Recycling is part of the culture here in Northern Michigan, and cartons are a big part of that.”

THE ROAD TO RECYCLING
The Road to Recycling: The Emmet County Origin Story

AVAILABLE ON

LISTEN NOW

Apple Podcasts Google Podcasts Spotify

Over a two week period, a whopping 399 kids, teachers and chaperones traveled through the Pleasantview Drop Off Center to learn how their recycling makes it from the curb to the manufacturers that use their materials to make new products.

Our tours include a classroom discussion about the recycling symbol and what it means (hint: it's not reduce, reuse recycle!), Dr. Seuss's The Lorax and energy conservation.

From there, the groups will see the tip floor where our hook lift and curbside trucks tip their loads and how the materials are transported to their respective sorting lines. School groups (and adults!) are always delighted by the robots used to sort their mixed containers and blown away by the sheer amount of paper recycled each week.



The MRF tour concludes in the loading dock and bale warehouse to talk about how every piece of recycling makes a difference to create new products, right here in Michigan.

Birchwood Farms Golf & Country Club



Photo credit: Doug Brown Photography

When you think of Birchwood, you probably think of the beautiful homes and green of the golf courses, not necessarily their green, sustainable initiatives. The annual recycler of the year award recognizes an entity whose program upholds Emmet County Recycling's mission to provide opportunities and education for employees, residents, businesses, and neighboring communities to reduce waste, reuse, recycle and properly dispose of materials in order to preserve the natural beauty of our northern Michigan community. This is the story of Birchwood Farms Golf & Country Club.

It started with a letter

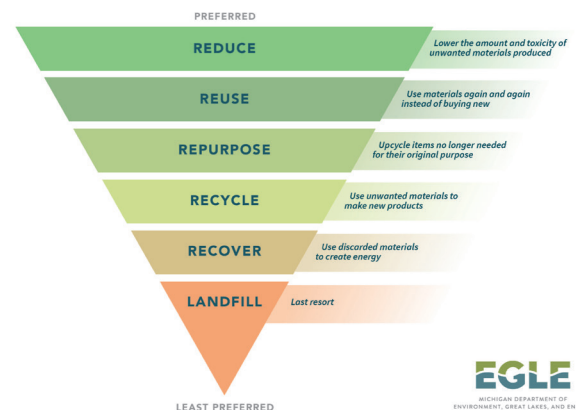
Paul Marazzo, general manager, remembers the recycling spark very specifically. It all started with a letter from a young lady named Abby, whose parents are members. Abby wrote that she would like to see Birchwood move toward a greener way of thinking. This letter echoed conversations in Paul's own home and propelled the club to survey their membership about recycling. The results were overwhelmingly in support of a recycling program for Birchwood. And so it began.

The partnership between Birchwood and Emmet County Recycling began with two leased drop site bins in the spring of 2019. One bin for paper, boxes and bags. The other for mixed containers. Residents now had one convenient location to drop off their recycling and garbage, rather than self-hauling recyclables to another location closer to town. Members have mentioned how convenient it is to recycle. New members have come into the club and said THANK YOU to the staff for offering this benefit.

For the clubhouse and grounds, staff implemented a practice in the recycling world we refer to as "twin your bins." The club purchased recycling bins to place next to garbage cans at their popular Three-Way House restaurant, where their three golf courses converge. Birchwood knew they couldn't just plop down the recycling bins and call it a day; they had to walk the walk. They researched and changed their thought (and purchasing) process to materials that could be recycled.

Recycling seemed to be going well, but in 2021 single use water bottles became a hot topic for Birchwood. Their membership was concerned about the recyclability of the material. The staff researched and attended trade shows to find a replacement material that was more eco-friendly than the #1 PET water bottles available to members on the course and beverage carts. A better material was not discovered, but a brilliant idea did stem from this scenario. The coup de grâce of the single use plastic water bottle at Birchwood Farms was offering refillable water bottles in their pro shop for purchase and placing water coolers throughout the golf courses.

SUSTAINABLE MATERIALS MANAGEMENT



EGLE

MICHIGAN DEPARTMENT OF ENVIRONMENT, GREAT LAKES, AND ENERGY

Michigan.gov/EGLE | 800-662-9278

This is a fabulous example of utilizing the waste hierarchy to its full potential. Birchwood has changed their mindset to reduce and reuse, which are the most environmentally preferred strategies according to the EPA. In the recycling realm, they're making a difference too.

Recycler of the Year Award 2023

In the five years of operating and maintaining their drop site bins, Birchwood has diverted 119.2 tons of mixed containers and 128.13 tons of paper, boxes and bags from landfill. That is the equivalent of removing annual emissions from 157 vehicles, conserving 82,967 gallons of gasoline or conserving 30,722 cylinders of propane.



Break it down

Chuck Mullins, ACSC and Public Safety Director at Birchwood Farms, monitors the recycling bins along with his staff. During our conversation, he made it clear that Birchwood residents truly care about the recycling program, knowing it's a benefit of their association that is not to be taken for granted. A message that rings loud and clear in their program is to break down the cardboard at the bin. Signs around the recycling area warn of a \$100 fine for anyone that does not follow the rules.

Not only has recycling become part of the culture, but membership and staff are well aware of the financial benefits. It starts with paying attention to what you're buying at the store - verifying it's a recyclable item. The more you recycle, the less you're throwing away, which has a dollar amount per bag. The less you're throwing away, the more you're saving. Taking it a step further, finding items that you can reuse has an even bigger cost savings - like Birchwood's use of refillable water bottles versus single use plastic water bottles.

Respect the Recycling

Eva MacDonald and her family have been residents and members since 2020 and practiced recycling long before joining the club. Their family recycles not only to show their kids the importance of sustainability, but to teach them reuse. "Objects don't go in the trash and live in the landfill forever, they can have a second life." Cardboard lives a marvelous second life as a diorama or stage for their puppets made from popsicle sticks in the MacDonald household. And when it comes time for these materials to be recycled, "it can be done as a whole family. It doesn't need to be a chore."

Eva's advice for those looking to make a new recycling habit in their house is to not get caught up in the details of what you can and can't recycle, but take advantage of the flyers and infographics available to get informed. Tape it on the wall for your kids (and spouse!) to see and support the recycling endeavor. Make it a game!

Pride of Birchwood

Every spring, the membership comes together for a full day of clean up. Volunteers cover the property picking up fallen branches, garbage and recycling collected in the woods and grounds throughout the winter. "It's cool to watch the membership. They motivated us into a change because they care so much about recycling, the club and their environment." When asked for any advice for communities looking to bring recycling to their neighborhood, Paul said simply, "Start it. Build it. It brings people together." Eva echoed Paul's thoughts and added "it took effort for people to get it here because we wanted it. Birchwood is receptive and willing to work with membership on things you want to see for the community, making it somewhere you want to live with your kids and family. The community of recycling at Birchwood connects us."

Join Emmet County Recycling and Birchwood Farms Golf & Country Club membership and staff for a recognition event April 18. Nominate a 2024 Recycler of the Year, reach out for opportunities in commercial or residential recycling, or educational opportunities!

Thank You Harold!



After decades of dedicated service, we bid farewell to a true jack-of-all-trades, Harold Evans. Throughout his remarkable journey with us, Harold has seamlessly transitioned through various roles, embodying versatility and commitment at every turn.

From his humble beginnings as a recycling processor, Harold's passion for excellence and tireless work ethic propelled him forward. In 2004, he took the wheel as a curbside driver, navigating our communities with precision and care.

Today, as Harold embarks on his well-deserved retirement, he leaves behind a legacy of hard work, resilience, and unwavering dedication. His ability to adapt and excel in every position he

undertook is a testament to his remarkable character and professionalism.

Harold's journey serves as an inspiration to us all, reminding us that with perseverance and determination, anything is possible. As he bids farewell to the daily grind, we extend our heartfelt gratitude for his countless contributions and wish him a retirement filled with joy, relaxation (in the garden), and endless adventures (in your Jeep!).

Congratulations Harold, on a career well-lived!



Hello and Welcome



Daniel

Gatehouse Attendant
February 2023



Dave

Recycle Processor
April 2023



Parker

Recycle Processor
May 2023



Sam

Gatehouse Attendant
November 2023

Waste Transfer Station

VOLUME (Yards): 134,104

2% decrease from 2022



CUSTOMERS: 73,436

6% increase from 2022

Hazardous Waste

HHW Events



ECR conducted two hazardous waste drop-off days, on Tuesday, June 20th and Saturday, September 30th.

In an effort to reduce expenses, we hosted an event during the weekday for the first time, which proved to be a successful decision. We extended the residential appointment hour for

the Tuesday event, leading to 236 appointments, while the September event welcomed 183 residents, totaling 419 participants over both days and together, we collected 39,852 pounds of hazardous materials, excluding the latex paint collected.

In the spring of 2023 we applied for a Petoskey Harbor Springs Community Foundation grant and were awarded \$10,000.



Petoskey-Harbor Springs Area
community foundation

That funding was utilized to cover processing fees of the hazardous materials collected from the events to keep them free for residents. The total event costs for the year amounted to \$48,221.03, and the grant played a significant role in bridging the funding gap. In addition, we collected \$4,622.60 in donations between both events.

ECR is proud to have achieved these results, and we remain committed to providing a safe and responsible hazardous waste disposal service to the community.

Daily Collection

In addition to special collection events, ECR accepts hazardous materials on a daily basis for recycling:



Electronics
134,040 lbs

*Reuse, recover and recycle components
Dynamic Lifecycle Innovations
of Onalaska, WI*



Latex Paint
46,700 lbs

New paint sold in Habitat for Humanity ReStores at ePaint Recycling of Battle Creek, MI



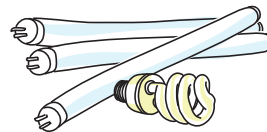
Batteries
31,612 lbs.

*New batteries, stainless steel, supplements, fertilizers
Cirba Solutions of Wixom, MI*



Motor Oil
23,660 lbs.

*Re-refined motor oil
Heritage-Crystal Clean
Saginaw, MI*



Lightbulbs
18,071 lbs.

*New bulbs, thermostats, concrete or ceramic tile
Cleanlites of Lansing, MI*



Antifreeze
5,280 lbs.

*New antifreeze
Heritage-Crystal Clean
Saginaw, MI*

Grant Updates



MDARD Clean Sweep – up to \$7,000 for pesticides
PHSACF -- \$10,000 with no match for HHW Funding
EGLE Recycling Infrastructure Grant -- \$28,000 for purchasing two 30-yard roll-off bins with a \$12,000 match, totaling \$40,000
EGLE Rural Electronics Recycling Grant (Batteries) - Page 4
\$10,000 with a \$2,500 match.
EGLE Scrap Tire Grant -- \$12,000 directly paid to CM Rubber for hauling and processing, we didn't actually receive the funds but it allowed us to recycle 4 trailers or approximately 4,000 tires at \$1/tire for residents from May 1, 2023 – September 30, 2023.
EGLE MICROS -- \$10,000 grant. The funding was used to conduct a feasibility study of ECR's compost facility operations, with the aim of establishing lasting partnerships for end markets. Funding also laid the foundation for plans to manage a productive program that is economically sustainable, as well as created a high-level guide to building a disaster debris management plan.

Materials Management Planning

In an effort to meet the State of Michigan's goal for a 45 percent residential recycling rate and shift focus from solid waste to materials management, the state passed amendments to Part 115, Michigan's Solid Waste Laws. The intention of these laws is to prioritize reducing, reusing & recycling over landfilling materials with an emphasis on organics diversion.

As part of the laws, the EGLE director called for an update to county materials management plans. The first step is for each county to form a committee made up of a solid waste disposal facility, waste hauler, MRF operator, composting facility, waste diversion facility, environmental interest group, area businesses, regional planning agency and elected officials of the county, township and city.

The planning process will take place over the course of three years and will have ample opportunities for public input.



We're Recyclers!

Of course we have fun too

Just before the December holidays, our staff came together to help spread our educational messages via social media in a fun, trending way.

The video came together so smoothly and our online audience loved it! With over 7,000 impressions and dozens of comments, our community asked great questions and was very complimentary of our program.

Messages included:

- Get carts to the curb by 7 AM
- Leave lids on containers
- Break down cardboard
- Leaves containers loose
- Recycle pizza boxes
- Bag your bags
- Recycle (and tape!) lithium batteries



CleanCoast Great Lakes Conservation Week



Blackbird Preschoolers



Blissfest Recycling



CleanCoast Facility Tour



Christmas Party!



Petoskey Robotics Team Spring Electronics Collection

Organics

3,363

food & floral scrap cart tips



Emmet County Recycling (ECR) operates a compost facility where organic materials like yard waste, food scraps, and floral scraps are collected and transformed into a nutrient dense soil amendment. Once the compost is screened and tested, it is available for purchase at the Pleasantview Drop Off Center, effectively integrating consumers into the circular economy model.



176 tons **Food & Floral Scraps**
+ 3,903 tons **Yard Waste**

By participating in this initiative, individuals not only acquire a valuable gardening resource, but also actively contribute to waste diversion efforts. Data from 2023 reveals significant environmental impact, equivalent to removing emissions from 110 passenger vehicles annually or conserving 58,376 gallons of gasoline - all from removing food and floral scraps from the waste stream.



ECR extends its commitment to sustainability through community engagement, like hosting a backyard compost workshop at the Petoskey District Library. ECR staff enjoy fostering education and empowering individuals to embrace composting practices.

Through these collective endeavors, Emmet County Recycling is promoting environmental stewardship and facilitating a tangible shift towards a more sustainable future.

Look for the 2024 compost campaign from the Michigan Organics Council!



Fats, Oils & Grease

667 gallons

Feedstock for renewable fuel
like biodiesel
Adrian, MI



Wood

615 tons

Woodchip mulch sold at ECR
Cogen facility in Grayling, MI

